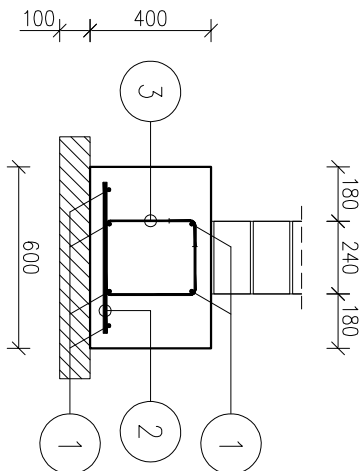


poz. l1 – ława fundamentowa (60x40 cm)
skala 1:25, L=96,7 mb (osiowo)



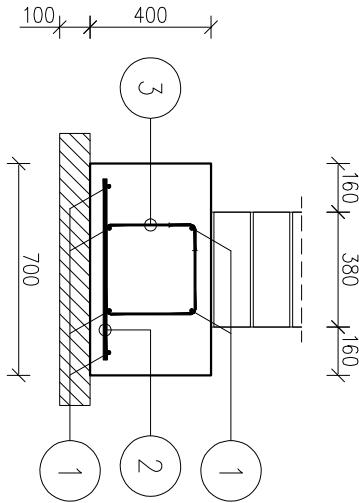
- 1

6φ12-L=101535
L=96700+5% no zokłady
- 3

387φ6-250-L=1220
rozstaw co 250
- 2

387φ12-250-L=500
rozstaw co 250

poz. l2 – ława fundamentowa (70x40 cm)
skala 1:25, L=27,2 mb (osiowo)



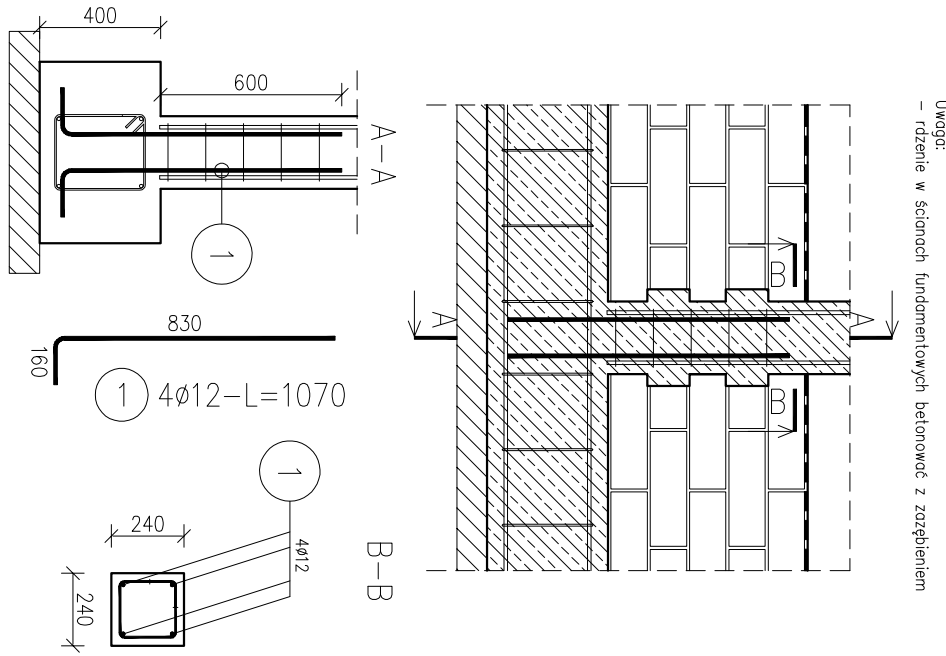
- 1

6φ12-L=28560
L=27200+5% no zokłady
- 3

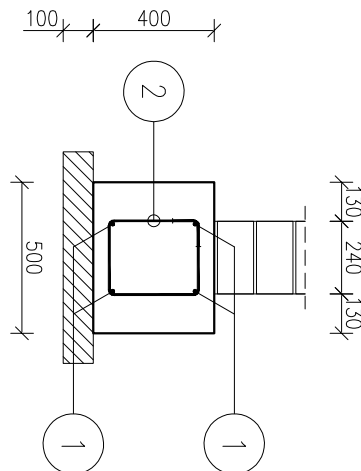
109φ6-250-L=1320
rozstaw co 250
- 2

109φ12-250-L=600
rozstaw co 250

poz. RS1 – startery rdzeni
skala 1:25, sztl.7



poz. l3 – ława fundamentowa (50x40 cm)
skala 1:25, L=21,6 mb (osiowo)

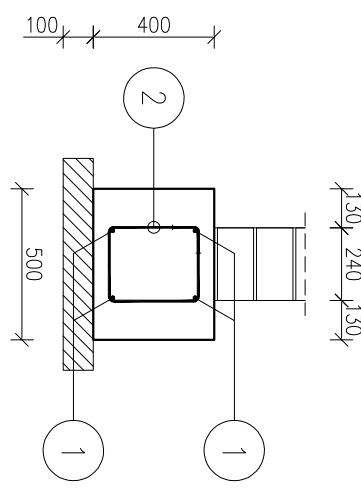


- 1

4φ12-L=22680
L=21600+5% no zokłady
- 2

87φ6-250-L=1220
rozstaw co 250

poz. l4 – ława fundamentowa (50x40 cm)
skala 1:25, L=3,2 mb (osiowo)

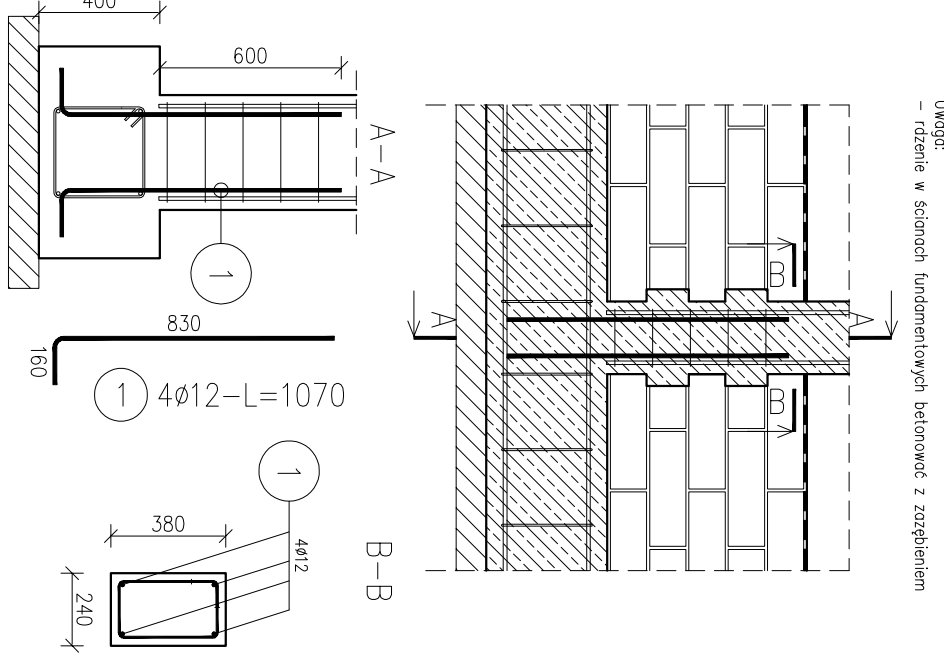


- 1

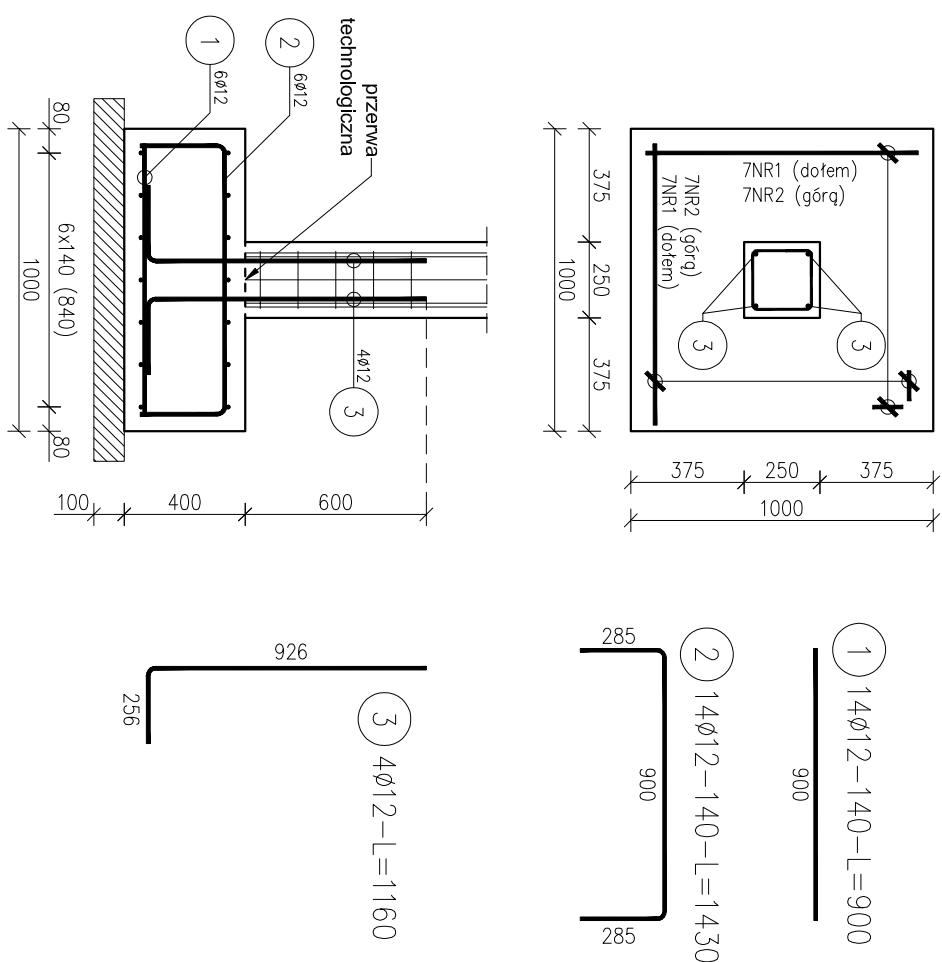
4φ12-L=3100
- 2

13φ6-250-L=1220
rozstaw co 250

poz. RS2 – startery rdzeni
skala 1:25, sztl.3



poz. SF1 – stopa fund. (100x100x40 cm)
sztl.1



ZESTAWIENIE STALI

Nr pręto	Ø	Stal	Długość pręto	Liczba prętów	Długość łączna
[-]	[mm]	[-]	[m]	na 1 poz.	[m]
L1					
1	12	B500SP	101,54	6	609,21
2	12	B500SP	0,50	387	193,50
3	6	B500SP	1,22	387	472,14
L2					
1	12	B500SP	28,56	6	171,36
2	12	B500SP	0,60	109	65,40
3	6	B500SP	1,32	109	143,88
L3					
1	12	B500SP	22,68	4	90,72
2	6	B500SP	1,22	87	106,14
L4					
1	12	B500SP	3,10	4	12,40
2	6	B500SP	1,22	13	15,86
L5					
1	12	B500SP	1,38	6	8,28
2	6	B500SP	1,22	13	15,86
L6					
1	12	B500SP	1,38	6	8,28
2	6	B500SP	1,22	13	15,86
L7					
1	12	B500SP	1,38	6	8,28
2	6	B500SP	1,22	13	15,86
L8					
1	12	B500SP	1,38	6	8,28
2	6	B500SP	1,22	13	15,86
L9					
1	12	B500SP	1,38	6	8,28
2	6	B500SP	1,22	13	15,86
L10					
1	12	B500SP	1,38	6	8,28
2	6	B500SP	1,22	13	15,86
L11					
1	12	B500SP	1,38	6	8,28
2	6	B500SP	1,22	13	15,86
L12					
1	12	B500SP	1,38	6	8,28
2	6	B500SP	1,22	13	15,86
L13					
1	12	B500SP	1,38	6	8,28
2	6	B500SP	1,22	13	15,86
L14					
1	12	B500SP	1,38	6	8,28
2	6	B500SP	1,22	13	15,86
L15					
1	12	B500SP	1,38	6	8,28
2	6	B500SP	1,22	13	15,86
L16					
1	12	B500SP	1,38	6	8,28
2	6	B500SP	1,22	13	15,86
L17					
1	12	B500SP	1,38	6	8,28
2	6	B500SP	1,22	13	15,86
L18					
1	12	B500SP	1,38	6	8,28
2	6	B500SP	1,22	13	15,86
L19					
1	12	B500SP	1,38	6	8,28
2	6	B500SP	1,22	13	15,86
L20					
1	12	B500SP	1,38	6	8,28
2	6	B500SP	1,22	13	15,86
L21					
1	12	B500SP	1,38	6	8,28
2	6	B500SP	1,22	13	15,86
L22					
1	12	B500SP	1,38	6	8,28
2	6	B500SP	1,22	13	15,86
L23					
1	12	B500SP	1,38	6	8,28
2	6	B500SP	1,22	13	15,86
L24					
1	12	B500SP	1,38	6	8,28
2	6	B500SP	1,22	13	15,86
L25					
1	12	B500SP	1,38	6	8,28
2	6	B500SP	1,22	13	15,86
L26					
1	12	B500SP	1,38	6	8,28
2	6	B500SP	1,22	13	15,86
L27					
1	12	B500SP	1,38	6	8,28
2	6	B500SP	1,22	13	15,86
L28					
1	12	B500SP	1,38	6	8,28
2	6	B500SP	1,22	13	15,86
L29					
1	12	B500SP	1,38	6	8,28
2	6	B500SP	1,22	13	15,86
L30					
1	12	B500SP	1,38	6	8,28
2	6	B500SP	1,22	13	15,86
L31					
1	12	B500SP	1,38	6	8,28
2	6	B500SP	1,22	13	15,86
L32					
1	12	B500SP	1,38	6	8,28
2	6	B500SP	1,22	13	15,86
L33					
1	12	B500SP	1,38	6	8,28
2	6	B500SP	1,22	13	15,86
L34					
1	12	B500SP	1,38	6	8,28
2	6	B500SP	1,22	13	15,86
L35					
1	12	B500SP	1,38	6	8,28
2	6	B500SP	1,22	13	15,86
L36					
1	12	B500SP	1,38	6	8,28
2	6	B500SP	1,22	13	15,86
L37					
1	12	B500SP	1,38	6	8,28
2	6	B500SP	1,22	13	15,86
L38					
1	12	B500SP	1,38	6	8,28
2	6	B500SP	1,22	13	15,86
L39					
1	12	B500SP	1,38	6	8,28
2	6	B500SP	1,22	13	15,86
L40					
1	12	B500SP	1,38	6	8,28
2	6	B500SP	1,22	13	15,86
L41					
1	12	B500SP	1,38	6	8,28
2	6	B500SP	1,22	13	15,86
L42					
1	12	B500SP	1,38	6	8,28
2	6	B500SP	1,22	13	15,86
L43					
1	12	B500SP	1,38	6	8,28
2	6	B500SP	1,22	13	15,86
L44					
1	12	B500SP	1,38	6	8,28
2	6	B500SP	1,22	13	15,86
L45					
1	12	B500SP	1,38	6	8,28
2	6	B500SP	1,22	13	15,86
L46					
1	12	B500SP	1,38	6	8,28
2	6	B500SP	1,22	13	15,86
L47					
1	12	B500SP	1,38	6	8,28
2	6	B500SP	1,22	13	15,86
L48					
1	12	B500SP	1,38	6	8,28
2	6	B500SP	1,22	13	15,86
L49					
1	12	B500SP	1,38	6	8,28
2	6	B500SP	1,22	13	15,86
L50					
1	12	B500SP	1,38	6	8,28
2	6	B500SP	1,22	13	15,86
L51					
1	12	B500SP	1,38	6	8,28
2	6	B500SP	1,22	13	15,86
L52					
1	12	B500SP	1,38	6	8,28
2	6	B500SP	1,22	13	15,86
L53					
1	12	B500SP	1,38	6	8,28
2	6	B500SP	1,22	13	15,86
L54					
1	12	B500SP	1,38	6	8,28
2	6	B500SP	1,22	13	15,86
L55					
1	12	B500SP	1,38	6	8,28
2	6	B500SP	1,22	13	15,86
L56					
1	12	B500SP	1,38	6	8,28
2	6	B500SP	1,22	13	15,86
L57					
1	12	B500SP	1,38	6	8,28
2	6	B500SP	1,22	13	15,86
L58					
1	12	B500SP	1,38	6	8,28
2	6	B500SP	1,22	13	15,86
L59					
1	12	B500SP	1,38	6	8,28
2	6	B500SP	1,22	13	15,86
L60					
1	12	B500SP	1,38	6	8,28
2	6	B500SP	1,22	13	15,86
L61					
1	12	B500SP	1,38	6	8,28
2	6	B500SP	1,22	13	15,86
L62					
1	12	B500SP	1,38	6	8,28
2	6	B500SP	1,22	13	15,86
L63					
1	12	B500SP	1,38	6	8,28
2	6	B500SP	1,22	13	15,86
L64					
1	12	B500SP	1,38	6	8,28
2	6	B500SP	1,22	13	15,86
L65					
1	12	B500SP	1,38	6	8,28
2	6	B500SP	1,22	13	15,86
L66					
1	12	B500SP	1,38	6	8,28
2	6	B500SP	1,22	13	15,86
L67					
1	12	B500SP	1,38	6	8,28
2	6	B500SP	1,22	13	15,86
L68					
1	12	B500SP	1,38	6	8,28
2	6	B500SP	1,22	13	15,86
L69					
1	12	B500SP	1,38	6	8,28
2	6	B500SP	1,22	13	15,86
L70					
1	12	B500SP	1,38	6	8,28
2	6	B500SP	1,22	13	15,86
L71					
1	12	B500SP	1,38	6	8,28
2	6	B500SP	1,22	13	15,86
L72					
1	12	B500SP	1,38	6	8,28
2	6	B500SP	1,22	13	15,86
L73					
1	12	B500SP	1,38	6	8,28
2	6	B500SP	1,22	13	15,86
L74					
1	12	B500SP	1,38	6	8,28
2	6	B500SP	1,22	13	15,86
L75					
1	12	B500SP	1,38	6	8,28
2	6	B500SP	1,22	13	15,86
L76					
1	12	B500SP	1,38	6	8,28
2	6	B500SP	1,22	13	15,86
L77					
1	12	B500SP	1,38	6	8,28
2	6	B500SP	1,22	13	15,86
L78					
1	12	B500SP	1,38	6	8,28
2	6	B500SP	1,22	13	15,86
L79					
1	12	B500SP	1,38	6	8,28
2	6	B500SP	1,22	13	15,86
L80					
1	12	B500SP	1,38	6	8,28
2	6	B500SP	1,22	13	15,86
L81					
1	12	B500SP	1,38	6	8,28
2	6	B500SP	1,22	13	15,86
L82					
1	12	B500SP	1,38	6	8,28
2	6	B500SP	1,22	13	15,86
L83					
1	12	B500SP	1,38	6	8,28
2	6	B500SP	1,22	13	15,86
L84					
1	12	B500SP	1,38	6	8,28
2	6	B500SP	1,22	13	15,86
L85					
1	12	B500SP	1,38	6	8,28
2	6	B500SP	1,22	13	15,86
L86					
1	12	B500SP	1,38	6	8,28
2	6	B500SP	1,22	13	15,86
L87					
1	12	B500SP	1,38	6	8,28
2	6	B500SP	1,22	13	15,86
L88					
1	12	B500SP	1,38	6	8,28
2	6	B500SP	1,22	13	15,86
L89					
1	12	B500SP	1,38	6	8,28
2	6	B500SP	1,22	13	15,86
L90					
1	12	B500SP	1,38	6	8,28
2	6	B500SP	1,22	13	15,86
L91					
1	12	B500SP	1,38	6	8,28
2	6	B500SP	1,22	13	15,86
L92					
1	12	B500SP	1,38	6	8,28
2	6	B500SP	1,22	13	15,86
L93					
1	12	B500SP	1,38	6	8,28
2	6	B500SP	1,22	13	15,86
L94					
1	12	B500SP	1,38	6	8,28
2	6	B500SP	1,22	13	15,86
L95					
1	12	B500SP	1,38	6	8,28
2	6	B500SP	1,22	13	15,86
L96					
1	12	B500SP	1,38	6	8,28
2	6	B500SP	1,22	13	15,86
L97					
1	12	B500SP	1,38	6	8,28
2	6	B500SP	1,22	13	15,86
L98					
1	12	B500SP	1,38	6	8,28
2	6	B500SP	1,22	13	15,86
L99					
1	12	B500SP	1,38	6	8,28
2	6	B500SP	1,22	13	15,86
L100					
1	12	B500SP	1,38	6	8,28
2	6	B500SP	1,22	13	15,86
L101					
1	12	B500SP	1,38	6	8,28
2	6	B500SP	1,22	13	15,86
L102					
1	12	B500SP	1,38	6	8,28
2	6	B500SP	1,22	13	15,86
L103					
1	12	B500SP	1,38	6	8,28
2	6	B500SP	1,22	13	15,86
L104					
1	12	B500SP	1,38	6	8,28
2	6	B500SP	1,22	13	15,86
L105					
1	12	B500SP	1,38	6	8,28
2	6	B500SP	1,22		